



ECA-B AC Charger

ECA-S07K/S11K/S22K-BS0

Intelligent and Convenient

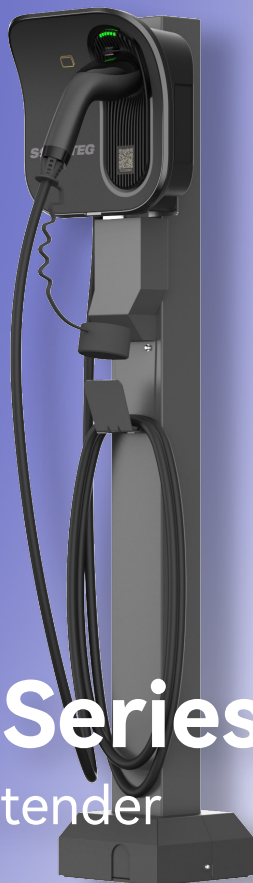
- Integrated System: PV, storage, and EV charging combined for optimized energy use
- Remote Access: Configure and monitor via APP or website from anywhere
- Scheduled Charging: Reduce bills during peak and valley price
- Dual Activation: Operate with either RFID card or App / Dual-channel to start & stop with RFID card and App

Energy Efficiency

- Green Mode: Reduce electricity bills by optimizing energy consumption
- Low Standby Power: Energy-efficient with less than 4W standby consumption
- High Compatibility: Support a wide range of vehicle models
- Safety Protections: Feature 7 integrated protections for safe charging

Installation and Durability

- Versatile Installation: Wall or pole mounting options available
- Compact Design: Easy to install and maintain due to light weight and compact structure
- Weatherproof: Rated IP65, suitable for all environments
- Impact Resistant: IK10 rating for high durability against impacts



Integ E Series

The Power Extender

ECA-B AC Charger

General Information			
Model	ECA-S07K-BS0	ECA-S11K-BS0	ECA-S22K-BS0
Charging Mode	Mode 3 (IEC 61851-1)		
Input Rating	230±15%Vac, 50/60Hz, single-phase, L+N+PE	400±15%Vac, 50/60Hz, three-phase, L1+L2+L3+N+PE	400±15%Vac, 50/60Hz, three-phase, L1+L2+L3+N+PE
Output Rating	7kW/ max. 32A	11kW/ max. 16A	22kW/ max. 32A
Grid Type	TN-S, TN-C-S, TT, IT(L1+L2 230Vac Single phase)		
Charging Interface	IEC 62196-2 Type 2 tethered plug (Case C)		
Metering	Onboard metering chip		
Power Consumption	4W		
Residual Current Protection	DC 6mA		
Protection	Overcurrent, Overvoltage, Undervoltage, Residual current, Over temperature, Grounding fault, Integrated surge protection		
User Interface			
Status Indication	LED indicator		
Button & Switch	Emergency button		
User Authentication	RFID card, App		
RFID Reader	ISO 14443 A		
Communication			
Network Interface	RS485		
Protocol (EVSE&EV)	Control pilot		
Environmental			
Operating Temperature	-30℃~50℃		
Storage Temperature	-40℃~85℃		
Humidity	5%~95% no condensation		
Altitude	≤3000m above sea level		
Mechanical			
IP Rating	IP65		
IK Rating	IK10		
Cooling	Natural cooling		
Charging Cable Length	5m or 7m(optional)		
Dimensions [W×H×D mm]	280*280*148 (without Pole), 280*1210*201(with Pole)		
Weight	Approx. 4kg	Approx. 6.1kg	
Installation	Wall Mounting, Pole Mounting		
Certification and standards			
Standards and Compliance	IEC 61851-1, IEC 61851-21-2, LVD 2014/35/EU, RED 2014/53/EU, IEC 62955 (RCD), RoSH 2.0, REACH		
Certification	CE-RED, CB		