

Mounting-System Roofparallel

With our newly developed Duraklick-ECO 0° system, we offer a particularly economical and low-priced alternative to conventional roof-parallel rooftop systems, which can usually be installed without roof penetration, on flat and inclined bitumen, foils and metal roofs.

The ECO 0° mounting system consists of the same high-quality components as our proven flat roof systems and is also based on the 230 mm wide floor profile with building protection mat - roof pitches of up to 5° can be stabilised only by ballast. For saddleroofs over 5°, the floor profile is simply guided over the ridge. For pentroofs at least one fixing point is required.

The outstanding system properties such as simple assembly, the click system, the lightweight aluminium composite construction and the excellent load distribution due to the 230 mm wide floor profile, of course also characterise this system. The roof-parallel arrangement of the modules guarantees high yields through maximum use of space. The raised module position simplifies assembly and guarantees a good rearventilation.

Convincing Features:

- ▶ simple and safe
- ▶ approved up to wind zone IV
- ▶ corrosion-resistant and statically tested
- ▶ Made in Germany





ECO 0°

Mounting-System ECO 0°

ECO 0°

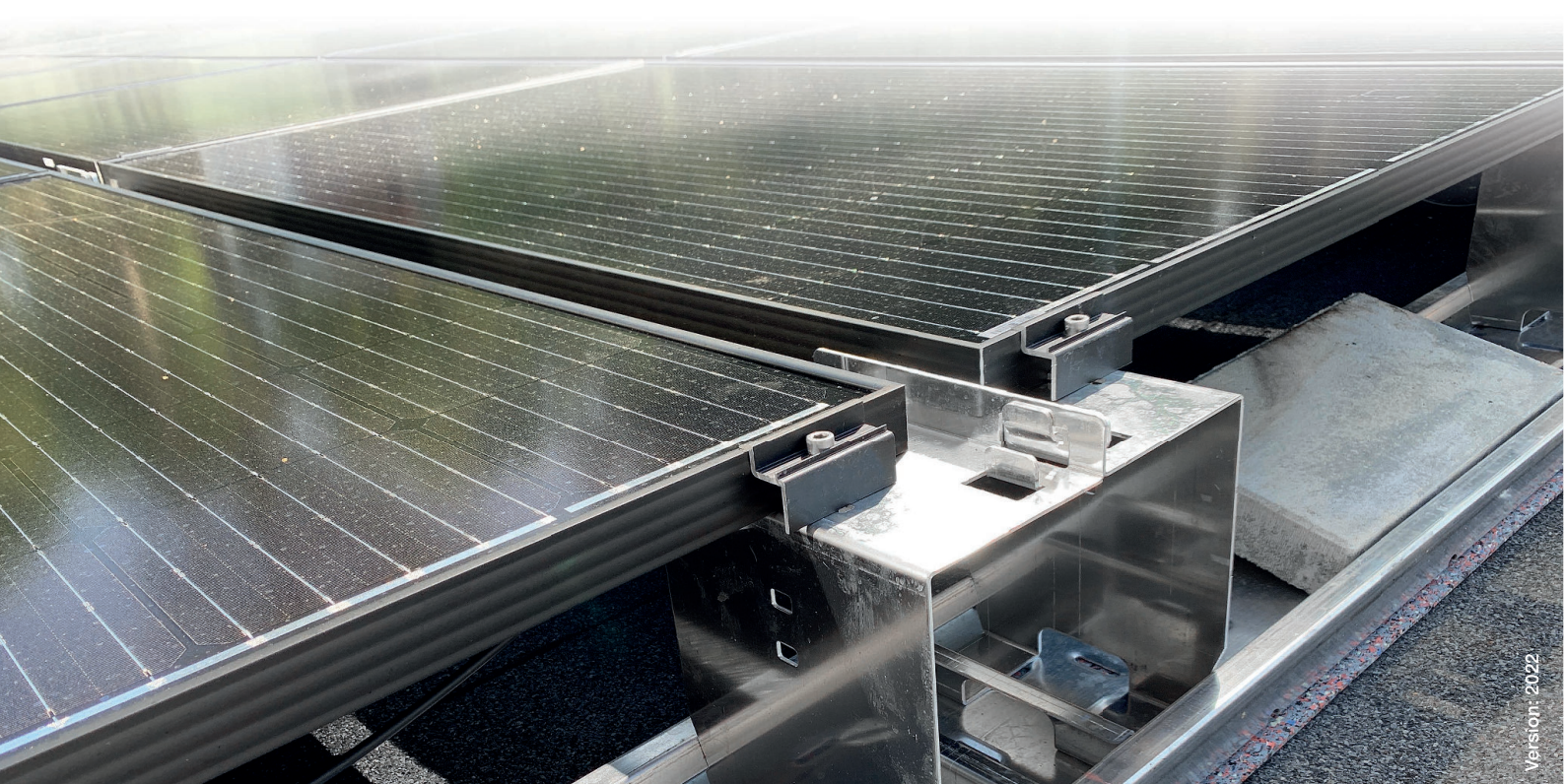
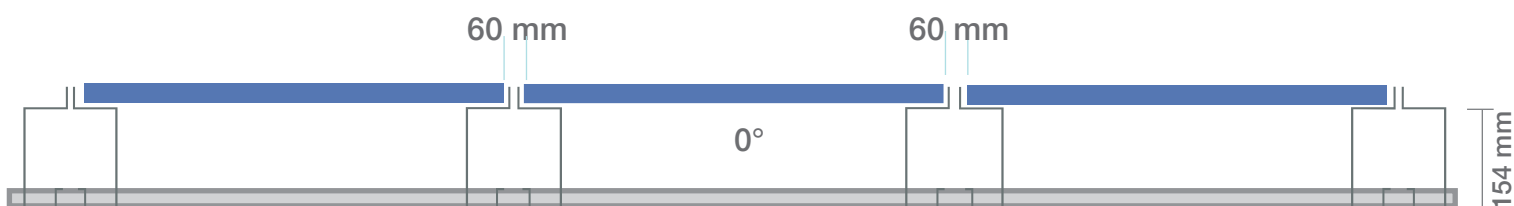
suitable for photovoltaic-modules with a width of 800 - 1200 mm 0°

Mounting is possible on the short or long side.

Technical Specifications

Inclination	0°
Rail length	0,3 - 6,0 m
Modul width	800 - 1200 mm
Distributed load	ca. 13,1 kg/m ² *
Liniar load	ca. 21,6 kg/m *
Material	aluminium / stainless steel

* assuming a module weight of 19 kg



SOLTOP
renewable energy

SOLTOP EU GmbH
Sonnenhalde 5
D-88161 Lindenberg
www.soltop.eu

Hauptsitz Schweiz:
SOLTOP Schuppisser AG
St. Gallerstrasse 3 + 5a
CH-8353 Elgg
www.soltop.ch

Sitz der Gesellschaft:
Lindenberg
Registergericht: Kempten
(Allgäu)
Geschäftsführer: Andreas
Zimmerer

Handelsregister: HRB 14331
MwSt: 127/137/60143
UID: DE300491338
EORI: DE314291943832627